



CHESAPEAKE FORESTRY WORKGROUP UPDATE

POTOMAC WATERSHED PARTNERSHIP, DECEMBER 8, 1015

SALLY CLAGGETT, SCLAGGETT@FS.FED.US
JULIE MAWHORTER, JMAWHORTER@FS.FED.US



Chesapeake Bay Program
A Watershed Partnership

2014 CHESAPEAKE BAY AGREEMENT

- 30 Outcomes including:
 - Forest Buffers
 - Tree Canopy
 - Land Conservation
 - Healthy Watersheds
 - Brook Trout
 - Environmental Literacy
 - Climate Change
 - Diversity



Strategies completed June 2015

www.chesapeakebay.net/managementstrategies

2014 CHESAPEAKE BAY AGREEMENT

FOREST BUFFER OUTCOME

Continually increase the capacity of forest buffers to provide water quality and habitat benefits throughout the watershed.

- Restore **900 miles per year** of riparian forest buffer and conserve existing buffers until at least 70% of riparian areas are forested.



State Leads:

Herb Peddicord – WV
Anne Hairston-Strang – MD
Greg Evans – VA
Matt Keefer - PA

Riparian Forest Buffer – Key Actions

- Additional funding for technical assistance and outreach
- Greater incentive payments through Conservation Reserve Enhancement Program (CREP)
- More emphasis on maintenance
- Actions to stimulate reenrollment



2014 CHESAPEAKE BAY AGREEMENT

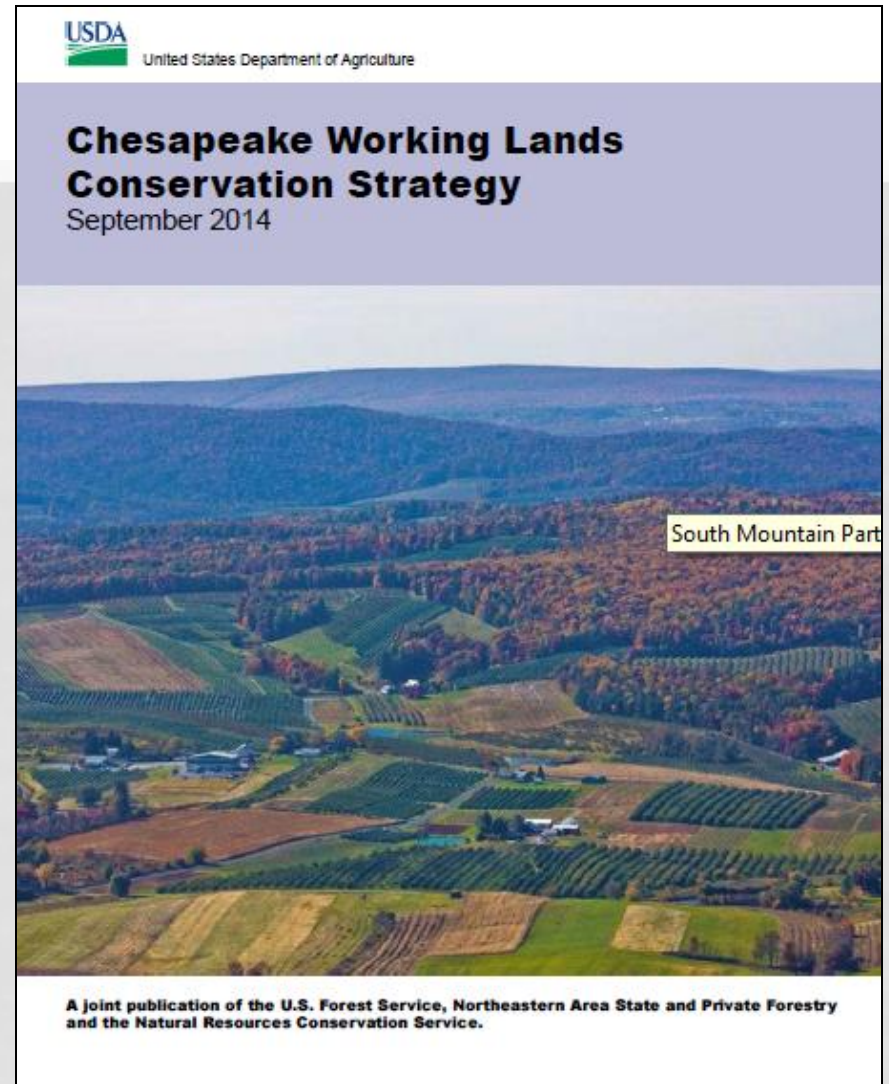
PROTECTED LANDS OUTCOME

By 2025, protect an additional 2 million acres of lands throughout the watershed – currently identified as high conservation priorities at the federal, state or local level – including 225,000 acres of wetlands and **695,000 acres of forest land of highest value** for maintaining water quality.



Forest Conservation – Key Actions

- Identify high value forest lands for conservation – add to LandScope Chesapeake tool
- Make maps relevant to local partners
- Partnership actions for working lands conservation



Mapping tool: www.landscape.org/chesapeake

2014 CHESAPEAKE BAY AGREEMENT

TREE CANOPY OUTCOME

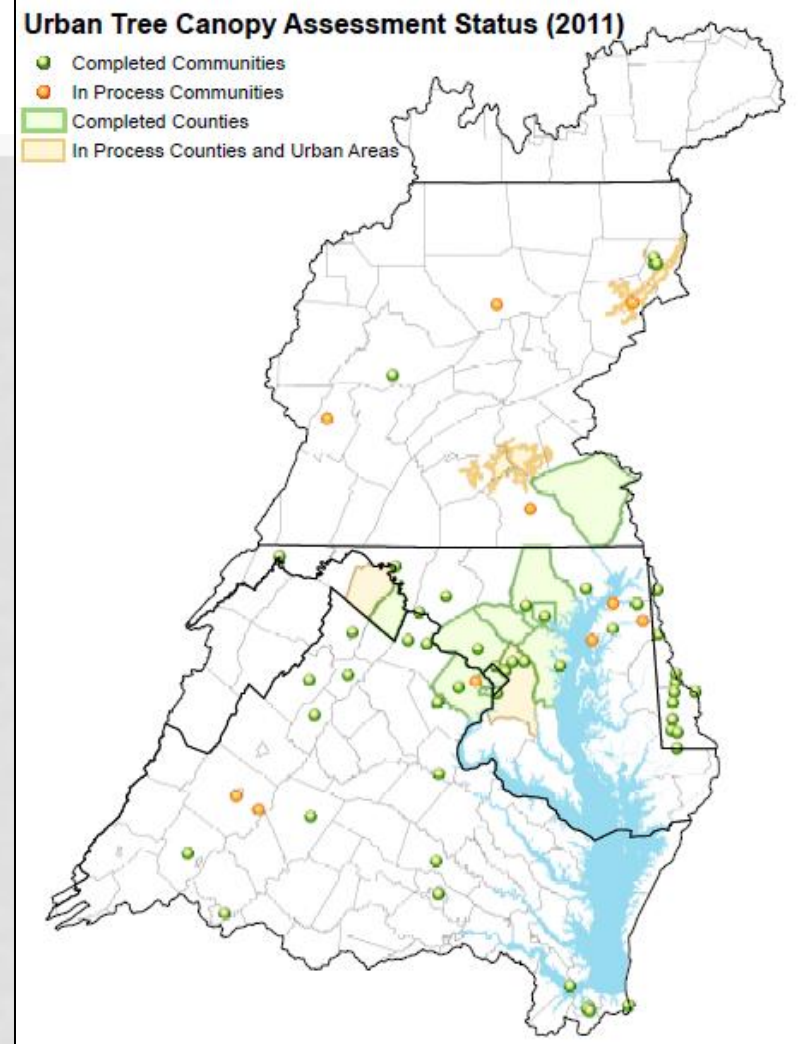
Continually increase urban tree canopy capacity to provide air quality, water quality and habitat benefits throughout the watershed.

➤ Expand urban tree canopy by **2,400** acres by **2025**.



Tree Canopy – Key Actions

- High resolution Tree Canopy data for entire watershed in 2016!
- Pursuing credit for Tree Canopy in Chesapeake Bay model
- Integrating tree canopy into stormwater programs



Tree Canopy – Key Actions

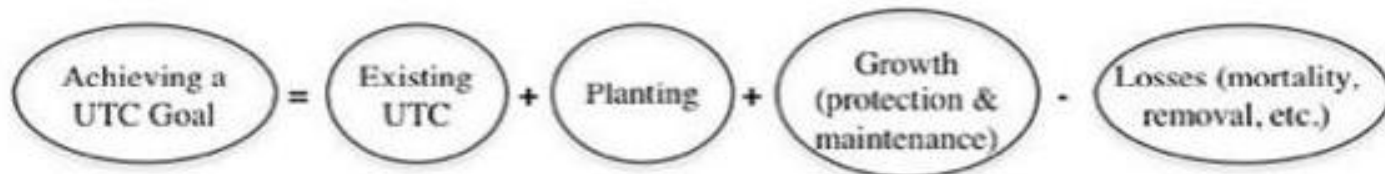
- Chesapeake Tree Canopy Network – new website/ listserve in 2016
 - Funding opportunities
 - Model ordinances
 - Planting & maintenance best practices
 - Outreach strategies

State Leads:

Frank Rodgers – WV
Marian Honecny – MD
Barbara White – VA
Rachel Reyna – PA



FACTORS INFLUENCING ABILITY TO REACH URBAN TREE CANOPY GOALS



SCHOOLS

UTILITIES

CHURCHES

PRIVATE SECTOR

HOMEOWNER ASSOCIATIONS

Funding/Partnerships

Policies/Ordinances

Community Outreach/Buy-in

Knowledge/Tools/Technical Capacity

STORMWATER

Development
Storms
Pests/Disease
Natural Mortality
Utility Clearing
Deer Browse

LOCAL LEADERSHIP

RESOURCES ALREADY AVAILABLE...

Urban Watershed Forestry Manual

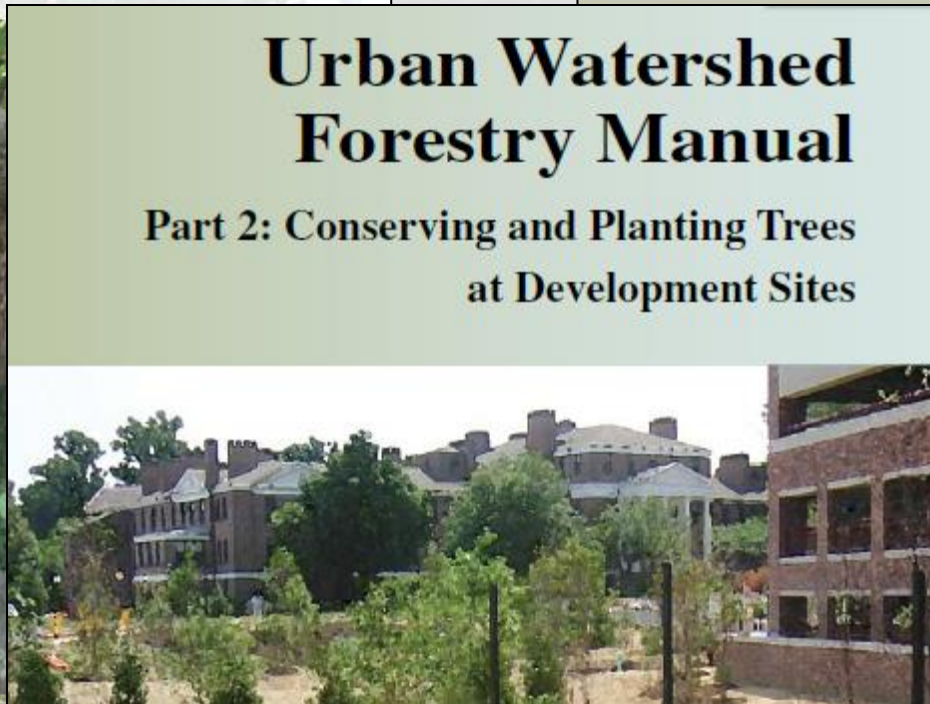
Part 1: Methods for
Increasing Forest Cover in a Watershed

Urban Watershed Forestry Manual

Part 3: Urban Tree Planting Guide

Urban Watershed Forestry Manual

Part 2: Conserving and Planting Trees
at Development Sites



United States Department of Agriculture
Forest Service
Northeastern Area
State and Private Forestry
NA-TP-01-06
September 2006

Available at www.forestsforwatersheds.org



Chesapeake Bay Program
A Watershed Partnership

QUESTIONS?

GET INVOLVED:

SALLY CLAGGETT, SCLAGGETT@FS.FED.US
JULIE MAWHORTER, JMAWHORTER@FS.FED.US

