



Photo Courtesy of Maryland DNR Forest Service, Spring 2006

A Landscape That Will Make A Difference

Sponsored by the Potomac Watershed Partnership, Maryland DNR Forest Service, Frederick County Government, and the Monocacy & C&O Watershed Alliance.



# Planting Native – *Dig In for Clean Water!*



Frank Rodgers  
Cacapon Institute  
P.O. Box 68  
High View, WV 26808

*Protecting rivers and watersheds since 1985.*



# **Planting Native –** ***Dig In for Clean Water!***

1. Current Programs
2. Who needs trees?
3. Who needs PWP's help?

# Planting Native – *Dig In for Clean Water!*

1. Current Programs
2. Who needs trees?
3. Who needs PWP's help?

# **Planting Native –** ***Dig In for Clean Water!***

## **1. Current Programs**

- State Nursery Sales & Programs
- Growing Native – Get Nuts for Clean Water!

# Maryland

BYB - PWP first pioneered to offer trees to private landowners

- Began in Western MD
- Now available in 10 counties



## Marylanders Plant Trees

Marylanders have planted and registered 75,842 trees



## TREE-MENDOUS

high-quality, native trees and shrubs available at reasonable prices

public lands - community open spaces, school grounds, government facilities, and rights-of-way



## State Nurseries

Spring only sales (?)

MD - Online & regional office assistance

PA - Mail order

VA – Online, mail order, regional offices  
& conservation districts

WV – Online, mail order, regional offices  
& conservation districts





- Conifers - Deciduous - Wye Oak Seedling -

### Green Ash



*(Fraxinus pennsylvanica)*

(1 YR SEEDLING 12-24 INCHES)

A large tree that commonly grows to 70 feet tall, green ash is planted for watershed protection and shade. More suitable to wet sites than white ash. Maryland native.

**Only available east of the Susquehanna River and the Chesapeake Bay because of a quarantine.**

Order in increments of 25 per species up to 100. (example: 25, 50, 75) If ordering 100 or more use increments of 100. (example: 100, 200, 300) Price listed is per seedling in group size you have selected. Price indicated in your shopping cart does not include the shipping fee. Shipping fee is 20% of the total dollar amount of your order or \$15, whichever is greater. You will receive a separate order confirmation from the nursery, which will include the shipping fee. Your card will not be charged until the time of shipping, which will be March-April 2012.

Choose Your Unit Pricing:

25-75 - \$ .85  
25-75 - \$ .65  
100-900 - \$ .55  
1000+ - \$ .27

Quantity desired

Add to cart

View your shopping cart

Complete your order

### Baldcypress

**SOLD OUT!**



*(Taxodium distichum)*

(1 YR SEEDLING 12-24 INCHES)

A large deciduous tree with a tapered trunk that often reaches 130 feet tall. Commonly found in river swamps, wet stream banks and wet depressions. Timber tree, valued for wildlife habitat. Maryland native.

Order in increments of 25 per species up to 100. (example: 25, 50, 75) If ordering 100 or more use increments of 100. (example: 100, 200, 300) Price listed is per seedling in group size you have selected. Price indicated in your shopping cart does not include the shipping fee. Shipping fee is 20% of the total dollar amount of your order or \$15, whichever is greater. You will receive a separate order confirmation from the nursery, which will include the shipping fee. Your card will not be charged until the time of shipping, which will be March-April 2012.

Choose Your Unit Pricing:

25-75 - \$ .85

Quantity desired

1

Add to cart



## Planting Stock Available - Spring 2012

NOTICE - Due to unexpected demands for the 2012 regeneration projects, very few seedlings are being offered for public sale this season. As seedlings are lifted and counted, some species may become available due to differences between inventory and final seedling count. Please check back to this site for availability updates in the Spring.

Species/Size	Age	Price/1,000	Minimum Order	Shipping	Availability
<b>Evergreens - Improved</b>					
IMP Norway Spruce (4-12")	2	\$175	500 min. / units of 500	\$1.00 / hundred	Available
<b>Riparian (<a href="#">Details</a>)</b>					
Riparian Bundle*		\$175	100 min. / units of 100	\$1.00 / hundred	Available

\* Only available upon recommendation of a forester. These trees require a good site, **preparation of the site prior to planting** and **post planting care for a minimum of one to three years.**

[Read instructions for Completing Nursery Stock Application](#)

[Penn Nursery Home Page](#)

### Bureau of Forestry

#### State Forests

#### Your Woods

#### Community Trees

#### Recreation

#### Wildfire

#### Wild Plants


#### Insects and Disease

#### Conservation Education

#### Find a Forest

#### Do Business

#### Contact Us

Search DCN 





- [Conifers](#)
- [Oaks](#)
- [Other Hardwoods](#)
- [Ash, Green](#)
- [Birch, River](#)
- [Cherry, Black](#)
- [Chestnut, Chinese](#)
- [Locust, Black](#)
- [Maple, Red](#)
- [Maple, Sugar](#)
- [Mulberry, Red](#)
- [Persimmon](#)
- [Sycamore](#)
- [Walnut, Black](#)
- [Seed Mixtures](#)
- [Small Trees & Wildlife](#)
- [Shrubs](#)
- [Specialty Packs](#)

Category Search  Search

Select

## Other Hardwoods

There are 74 items to display. Items 1 to 20:



[Ash, Green 1.0 \(A\) Quantity: 10](#)  
 Item Number: dof0040  
 Unit of Price: 10 each  
 Price: \$20.00



[Ash, Green 1.0 \(B\) Quantity: 25](#)  
 Item Number: dof0041  
 Unit of Price: 25 each  
 Price: \$45.00



[Ash, Green 1.0 \(C\) Quantity: 50](#)  
 Item Number: dof0042  
 Unit of Price: 50 each  
 Price: \$75.00



[Ash, Green 1.0 \(D\) Quantity: 100](#)  
 Item Number: dof0043  
 Unit of Price: 100 each  
 Price: \$115.00



[Ash, Green 1.0 \(E\) Quantity: 250](#)  
 Item Number: dof0044  
 Unit of Price: 250 each  
 Price: \$150.00



[Ash, Green 1.0 \(F\) Quantity: 500](#)  
 Item Number: dof0045  
 Unit of Price: 500 each  
 Price: \$220.00



[Ash, Green 1.0 \(G\) Quantity: 1000](#)  
 Item Number: dof0046  
 Unit of Price: 1000 each  
 Price: \$290.00

	<i>WHOLESALE</i>	<i>"KITS"</i>	<i>REBATES</i>	<i>GRANTS</i>	<i>LARGER STOCK</i>
<b>MD</b>	Nurseries	Backyard Buffers (10 counties expanding to entire state)	Marylands Plant Trees (\$25 off on \$50 or more)	Treemendous MD	Treemendous MD
<b>PA</b>	Nurseries		Tree Vitalize (\$1.00 anywhere in the state) Tree Vitalize (limited area \$15 off \$50 or more)		
<b>VA</b>	Nurseries	VDOF Nursery "Specilty Packs" Conservation Districts (varies)			
<b>WV</b>	Nurseries	Conservation Districts (varies)		Bay Communities CommuniTree	Bay Communities CommuniTree



# Planting Native – *Dig In for Clean Water!*

## 1. Current Programs

- State Nursery Sales & Programs
- Growing Native – Get Nuts for Clean Water!



Volunteers of all ages and backgrounds participate in *Growing Native* by collecting native tree seeds across the region to support state tree nurseries.



Developed for PWP by Potomac Conservancy.

Planting Native will follow the model of:

- Multi-state outreach
- Ambassadors led volunteer events
- Support existing state programs



# Planting Native – *Dig In for Clean Water!*

1. Current Programs
2. Who needs trees?
3. Who needs PWP's help?

We all need trees.

## Potomac River Watershed Forest Cover

### Cacapon Institute

*Protecting Rivers Since 1985*

[www.cacaponinstitute.org](http://www.cacaponinstitute.org)

304-856-1385



Percent tree canopy for "City Subdivision" as organized by the USDA Forest Service Northern Research Station. For more information contact Cacapon Institute or visit:  
<http://nrs.fs.fed.us/data/urban/>

### Percent Canopy



# URBAN AND COMMUNITY - WHY

- Maximize tree benefits where people are concentrated
  - Reduce pollution and flooding from stormwater
  - Mitigate air quality problems and related public health concerns
  - Shade reduces urban heat island effect and energy costs
  - Improve aesthetics, recreation, property values, etc.



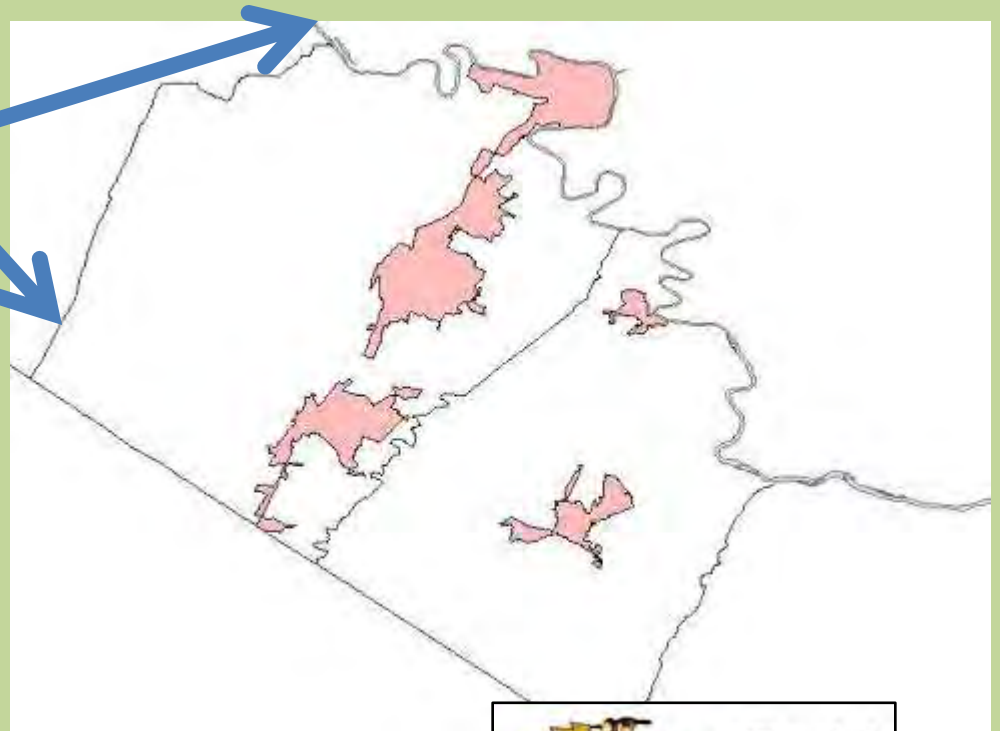


# Urban areas need trees.

“Urban” is any census block with more than 500 persons per square mile, or the entirety of any incorporated area that has one such census block.



“**Urban trees**” are the trees we live with, the trees that grace our towns, neighborhoods, parks, schools, and roadsides.



Why do we need trees?

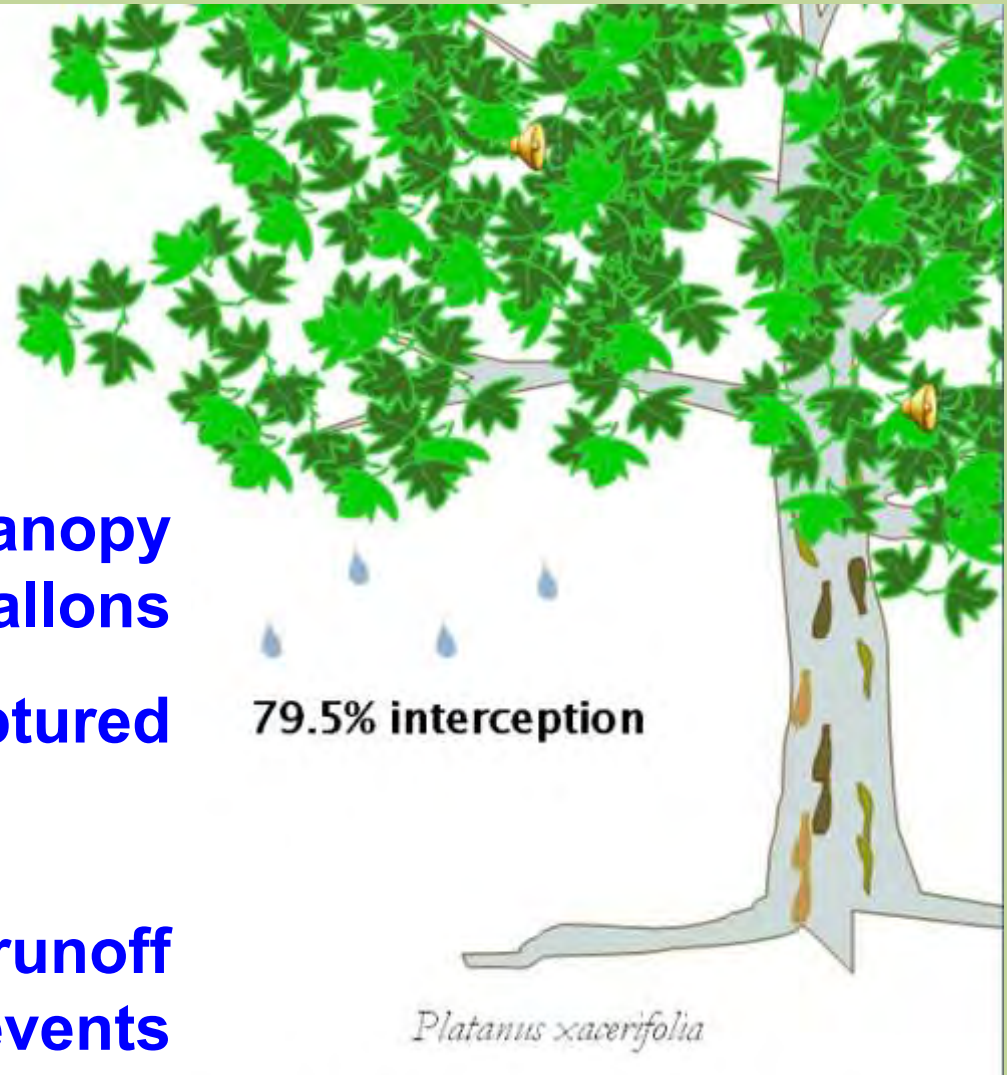
- MS4

~1 inch rainfall event (24 h)

**1" rain on 40' tree canopy  
= >800 gallons**

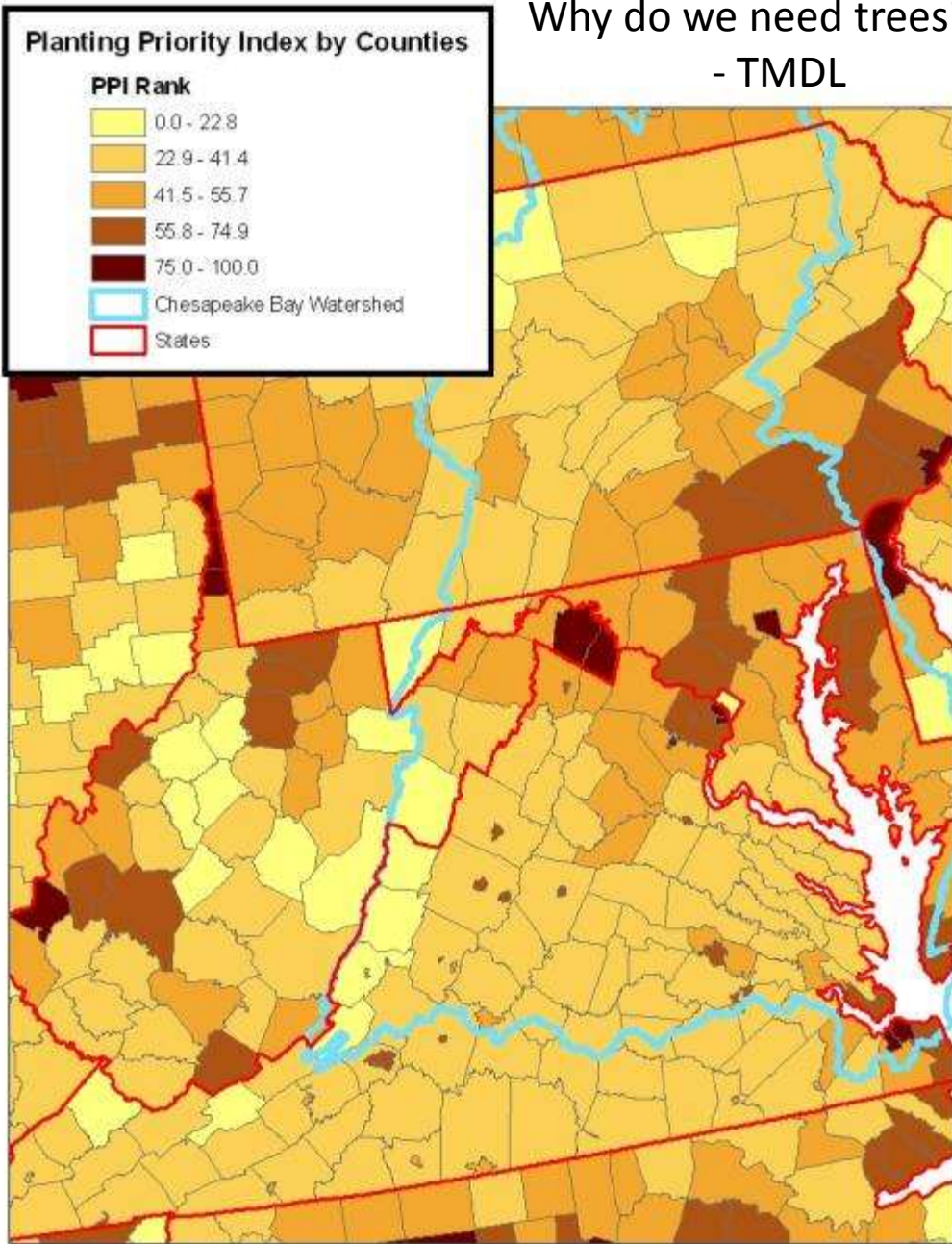
**~ 650 gallons captured**

**With trees = <25% the runoff  
in most rain events**



**Dr. Susan Day, VT**

## Why do we need trees? - TMDL



## State of the Chesapeake Bay Forest

>750,000 acres lost since 1982, primarily to sprawling development.

36% vulnerable to development.

60% fragmented by housing subdivisions, farms, and other human uses.

40% occurs within the wildland-urban interface.

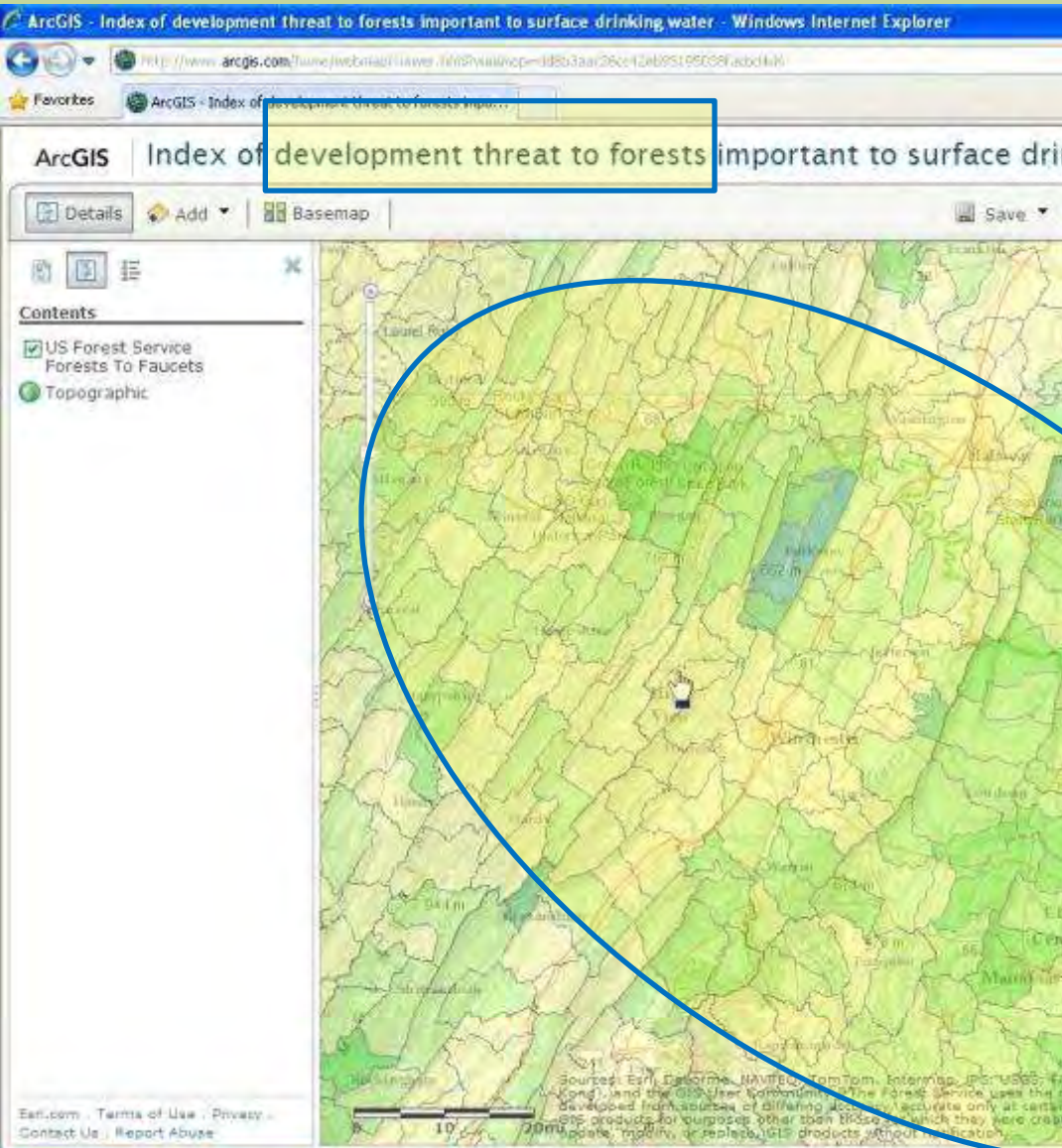
**Increasing “parcelization”**  
~70% of all family forest owners holding less than 10 acres.



# Why do we need trees? Drinking water.

## Forests to Faucets

Potomac is nationally recognized as *important and threatened.*



# Planting Native – *Dig In for Clean Water!*

1. Current Programs
2. Who needs trees?
3. Who needs PWP's help?

# Planting Native – *Dig In for Clean Water!*



Who do we *know*  
that we *know*  
doesn't *know*  
they need trees?

# Planting Native –

## *Dig In for Clean Water!*

### 3. Who needs help?

We know where trees are needed but are those folks ready to plant trees? Do they know they need trees?

Planting Native will look at localities capacity.

- State programs?
- State regulations?
- Local programs & regulations?
- Watershed or conservation groups?
- Lack of the above?



## **Planting Native** *is intended to*

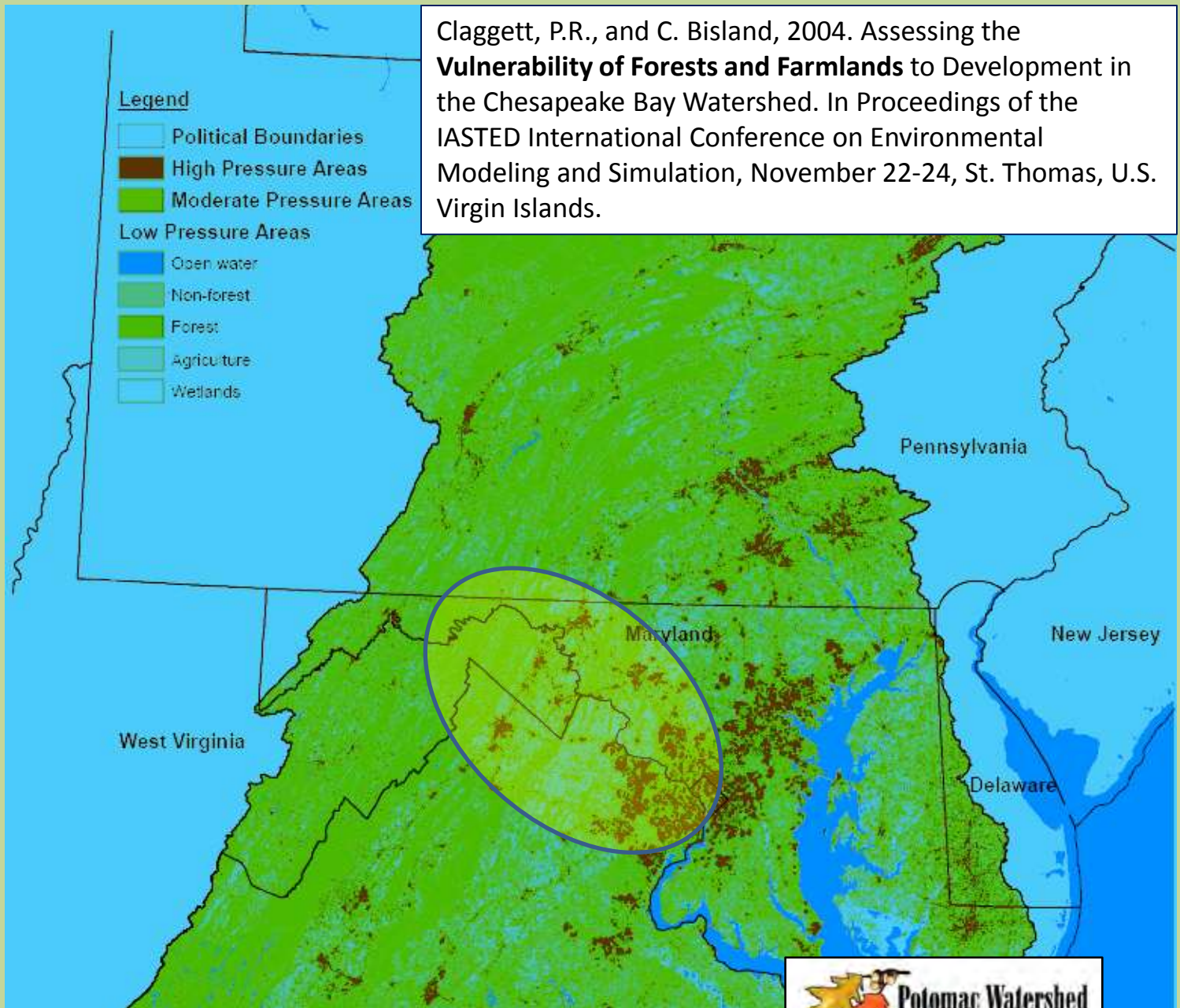
- Support state nurseries & programs
- Support existing volunteer groups by expanding selection of species and choice of “kits”
  - Planting Native can draw across state nurseries
  - Be responsive to volunteers’ needs
  - Cost saving in bundles
- Find new audiences of small land owners by developing vectors such as:
  - HOA – community engagement
  - School distribution – green leaders
  - County fairs – “non-green” audience





We know where trees are needed but do the locals know?

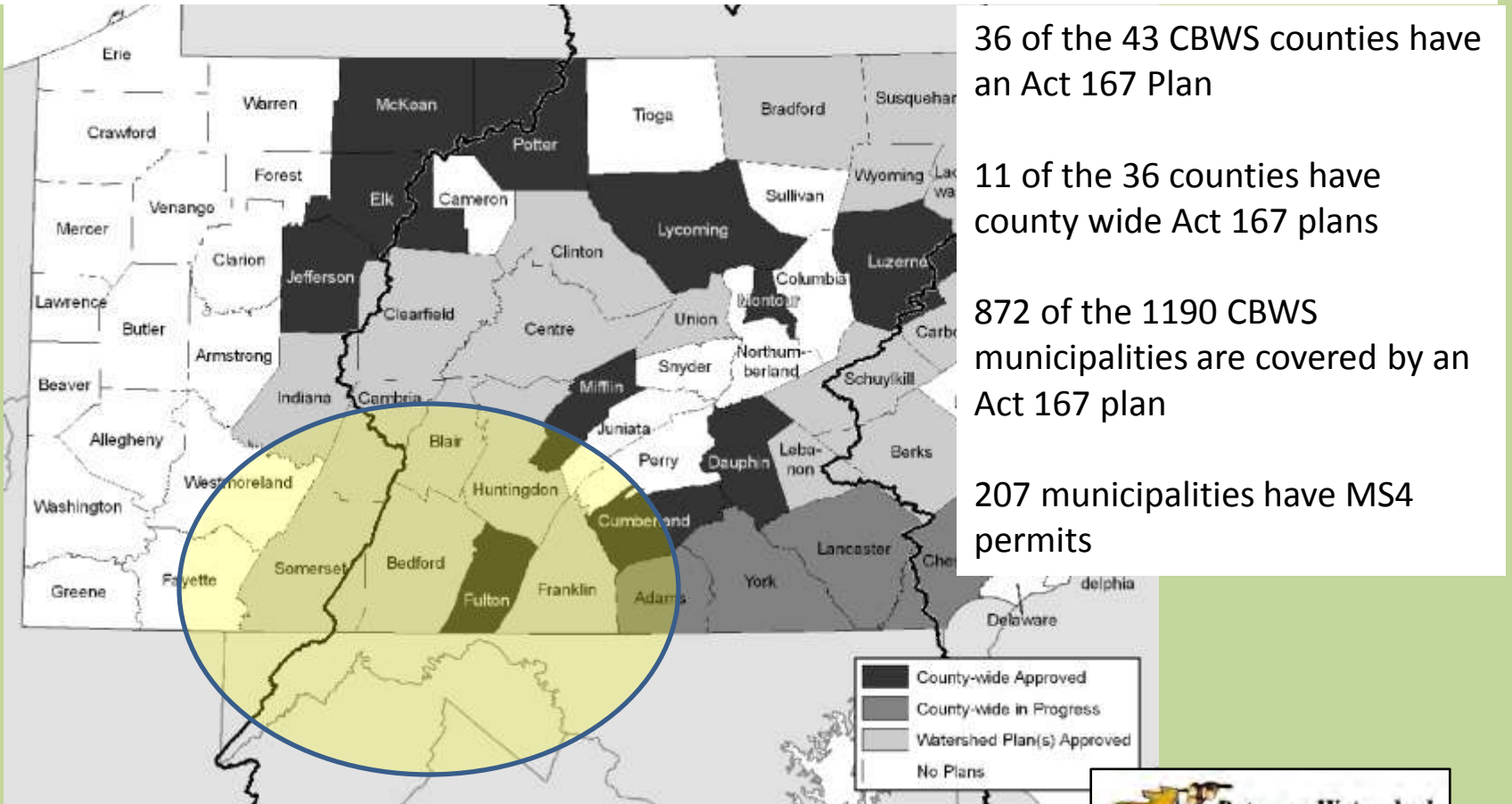
Claggett, P.R., and C. Bisland, 2004. Assessing the **Vulnerability of Forests and Farmlands** to Development in the Chesapeake Bay Watershed. In Proceedings of the IASTED International Conference on Environmental Modeling and Simulation, November 22-24, St. Thomas, U.S. Virgin Islands.



# PA Methods for Prioritizing UTC assessments

Christopher Peiffer –DCNR



Act 167 – Stormwater management plan. Municipalities within the county must implement these measures through ordinances and regulations.

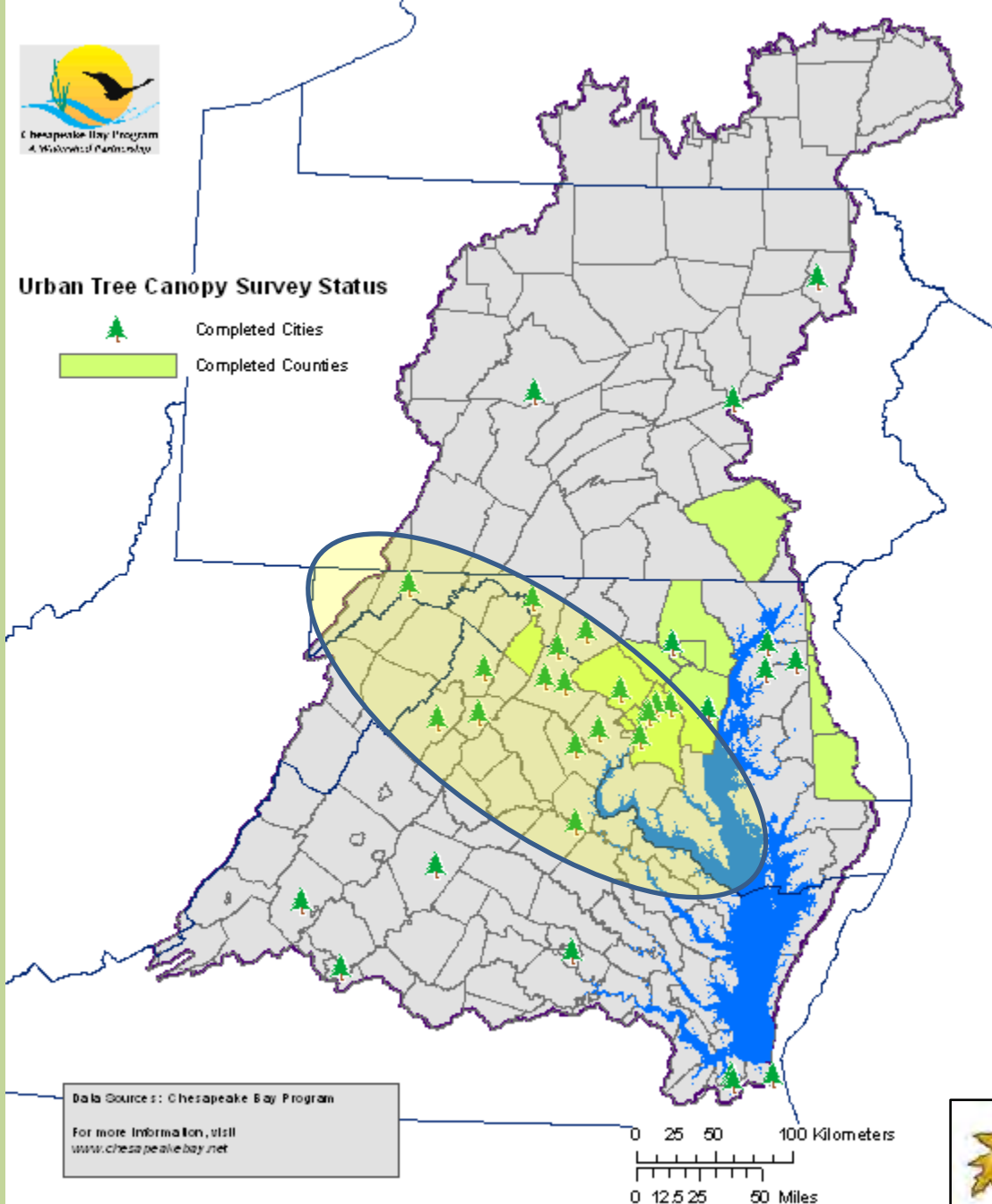




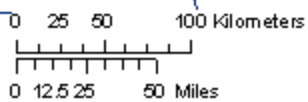
Chesapeake Bay Program  
A Watershed Partnership

### Urban Tree Canopy Survey Status

-  Completed Cities
-  Completed Counties

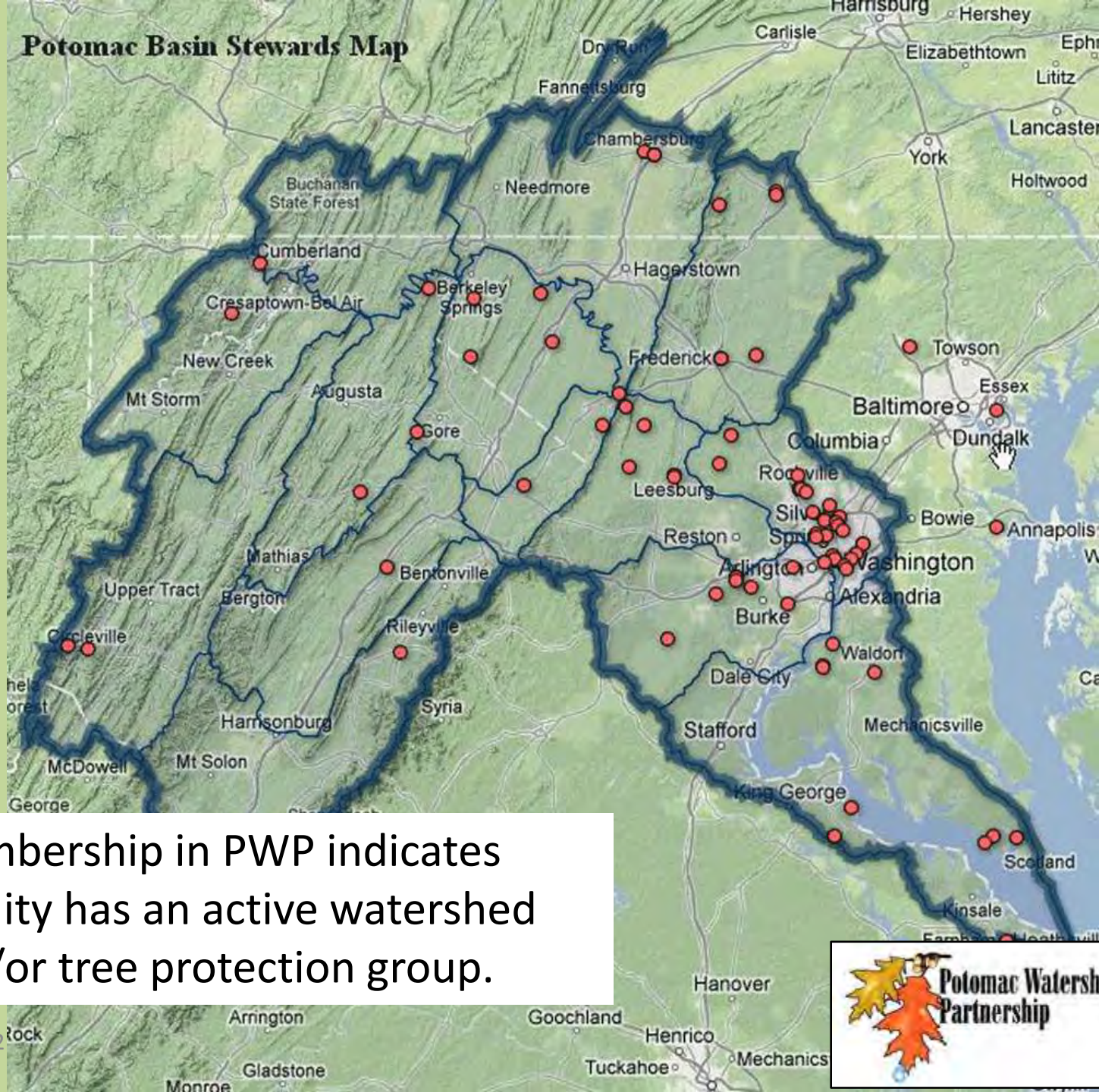


Data Sources: Chesapeake Bay Program  
For more information, visit  
[www.chesapeakebay.net](http://www.chesapeakebay.net)



UTC assessment is an indicator the municipality realizes they need more trees.

# Potomac Basin Stewards Map



Membership in PWP indicates locality has an active watershed and/or tree protection group.



## Next steps

What Planting Native need from PWP members.

- Information
- Pilot locations
- More surveys of need & capacity

What do you want from Planting Native?

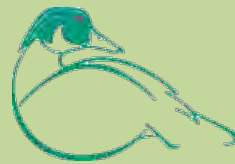
- Larger native tree stock
- Grow out stations

***Reach beyond  
Early adopters.***



# Planting Native – *Dig In for Clean Water!*

Questions? Ideas?



Frank Rodgers  
Cacapon Institute  
P.O. Box 68  
High View, WV 26808

*Protecting rivers and watersheds since 1985.*

