



A Healthy Woodlands Partnership

www.forestryforthebay.org

Craig Highfield, Program Manager



A Healthy Woodlands Partnership





The Woods In Your Backyard

Workshop Agenda

Blue Ridge Community College, Room D102, June. 2, 2012



A Healthy Woodlands Partnership

Offered in

Luray, VA
Page Co.
Sept. 13 & 20

Blandy Arboretum
(Frederick Co.)
September 17

The Woods in Your Backyard

Learning to Implement Your Goals for Your Backyard Natural Area

By
Jonathan Kay
Jay Strahm
Adam Cowling
Jon Frisley

The image shows a book cover for "The Woods in Your Backyard". The cover features a collage of nature photos: a green field, a tree trunk, a forest path, and a landscape. The title is in large white letters, and the subtitle is in smaller white letters. The authors' names are listed at the bottom. To the right of the book cover is a grey box with white text listing the workshop locations and dates.

**Two-Part Workshop in Berkeley Co.
May 5th & 12th**

WEST VIRGINIA
Division of Forestry

A Healthy Woodlands Partnership
www.forestryforthebay.org

The image is a promotional banner for a workshop. It features a green header with white text. Below the header is a banner for the West Virginia Division of Forestry, with a logo on the left and the text "WEST VIRGINIA Division of Forestry" in the center. Below this is the "Forestry for the Bay" logo, and at the bottom, the text "A Healthy Woodlands Partnership" and the website "www.forestryforthebay.org".

The Woods in Your Backyard



A Sustainable Landscapes
Workshop



Friday, March 30, 2012
Keystone College, LaPlume, PA
or

Saturday, March 31, 2012
East Stroudsburg University
9:00 am - 3:30 pm

Workshop Sponsors

PENNSYLVANIA STATE UNIVERSITY



College of
Agricultural
Sciences



A Healthy Woodlands Partnership



pennsylvania

DEPARTMENT OF CONSERVATION
AND NATURAL RESOURCES

www.dcnr.state.pa.us



pennsylvania environmental council

Woods in Your Backyard

- 8:30 Registration
- 9:00 **The Woods in Your Backyard** - Dr. Jim Finley, Professor of Forestry, Penn State University
- 10:00 Break
- 10:15 **Forest Ecology** - Dr. Jim Finley, Professor of Forestry, Penn State University
- 11:15 **Invasive Plants in your Landscape** - Vincent Cotrone, Forester, Penn State University
- 12:00 Lunch (provided)
- Afternoon Concurrent Sessions**
- 1:00 **A) Native Plants & Woodland Ecology**
Bill Sweeney, Jacobsburg Environmental Education Center, DCNR
- B) Wildlife in Your Backyard** - Roger Spotts, Monroe Conservation District
- 1:55 **A) Streams, Lakes and Wetlands in Your Woods**
Craig Highfield, Program Manager, Forestry for the Bay
- B) Reforestation: Planting Trees In Your Backyard** - Andrew Duncan, Forester, DCNR
- 2:45 **A) Managing Rainwater in Your Backyard - Designing Raingardens** - Paul Bechtel, McLane Associates
- B) Developing a Plan for Your Land** - Nancy Baker, Bradford/Susquehanna Forest Landowner Association
- 3:30 Meeting Adjourned

Wildlife in Your Backyard Woods



Photo by Terry Spivey

UGA1374033

Create and Enhance the
Wildlife Habitat
Around Your Home

Friday, January 27, 2012
Morgantown Holiday Inn
6170 Morgantown Road
Morgantown, PA 19543



A Healthy Woodlands Partnership

Forestry for the Bay
Craig Highfield, Program Manager

Mar-Len Environmental, Inc.
Leonard Wrabel, Consulting Forester

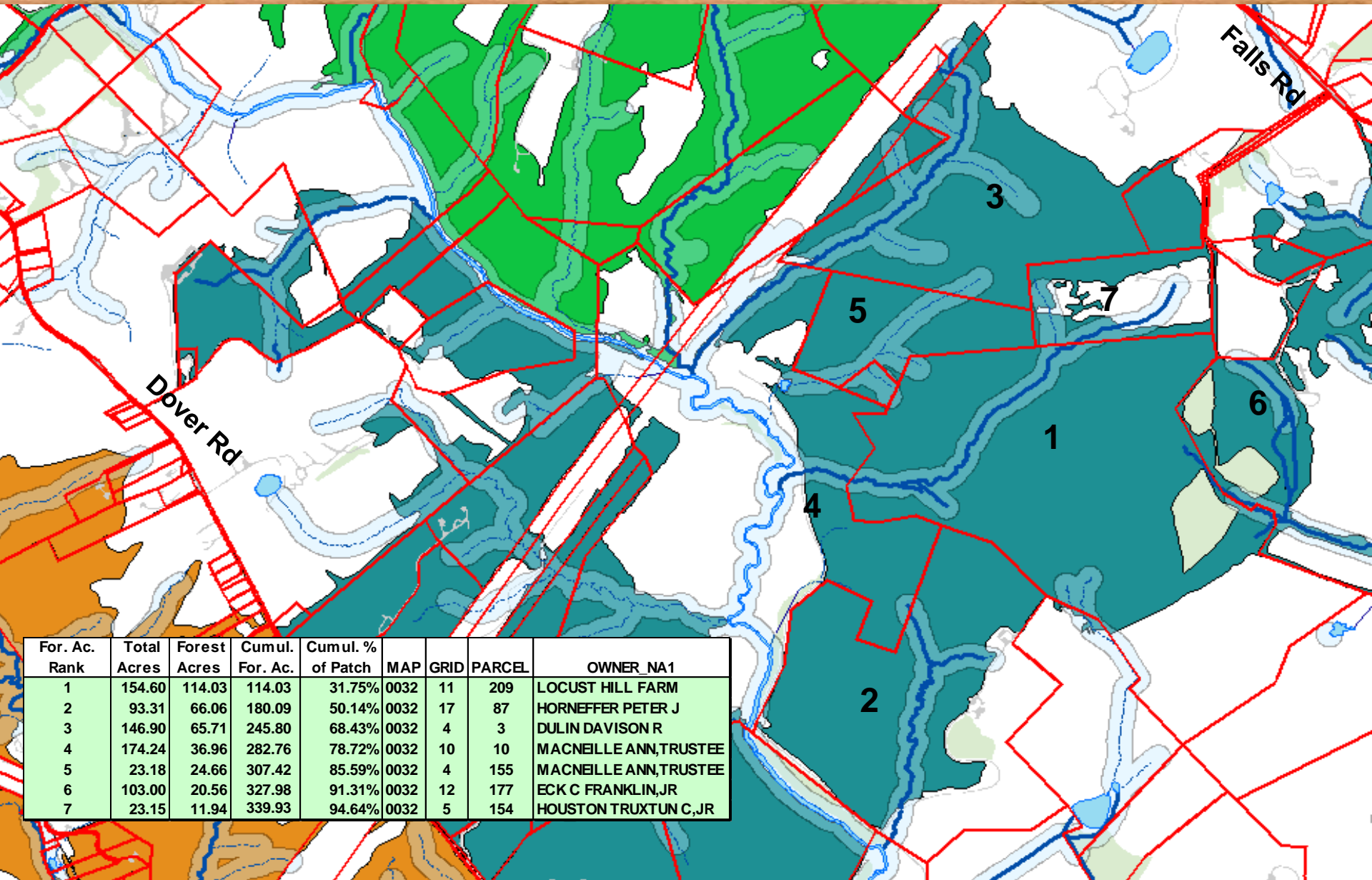
**In cooperation with the Baltimore County Department of
Environmental Protection & Sustainability**



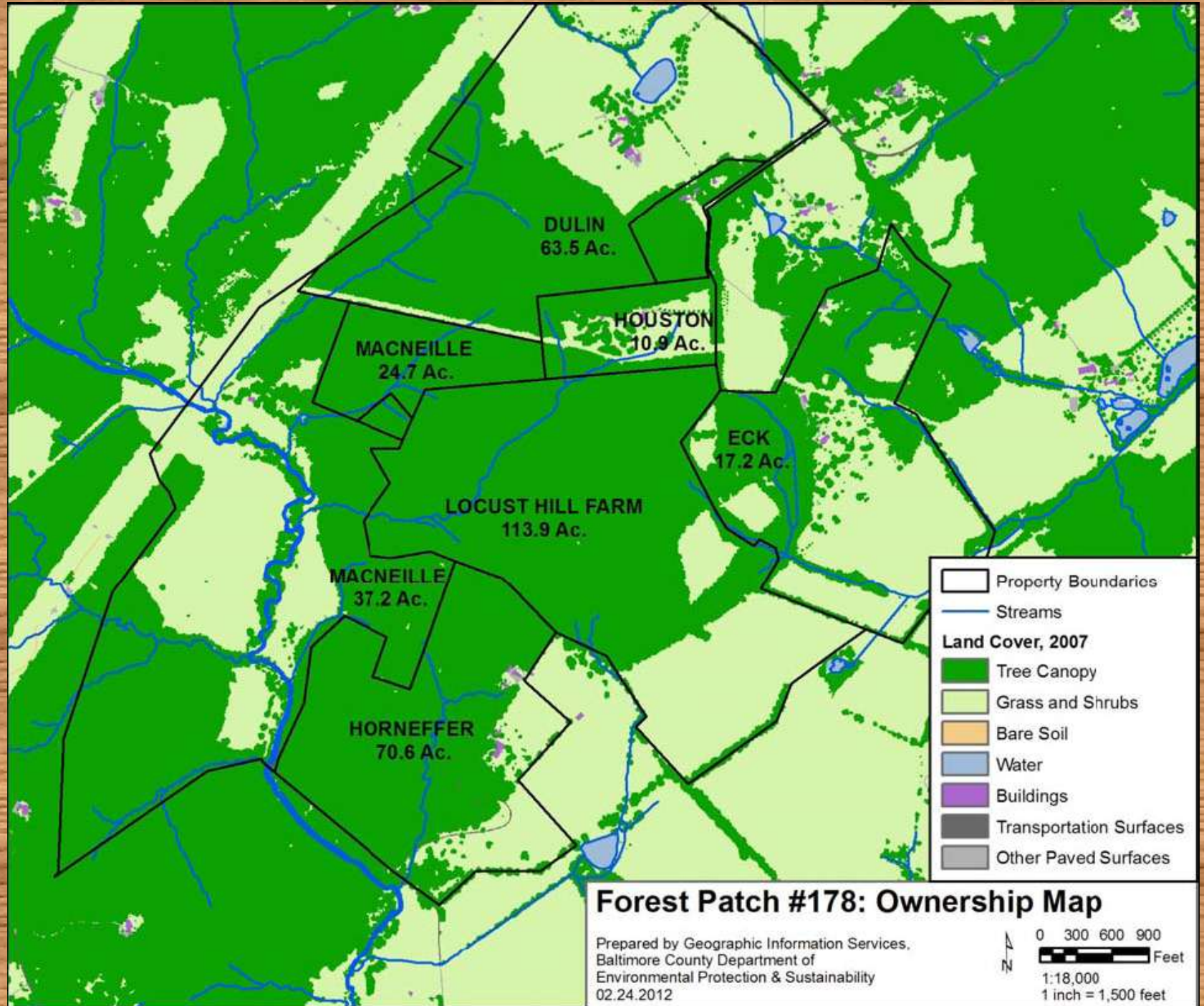
February 2012



Forest Patch #178: 359.19 acres (Piney Run)



Map numbers key to table of owners, ranked by size of forest in patch





UNIVERSITY OF
MARYLAND
EXTENSION
Solutions in your community

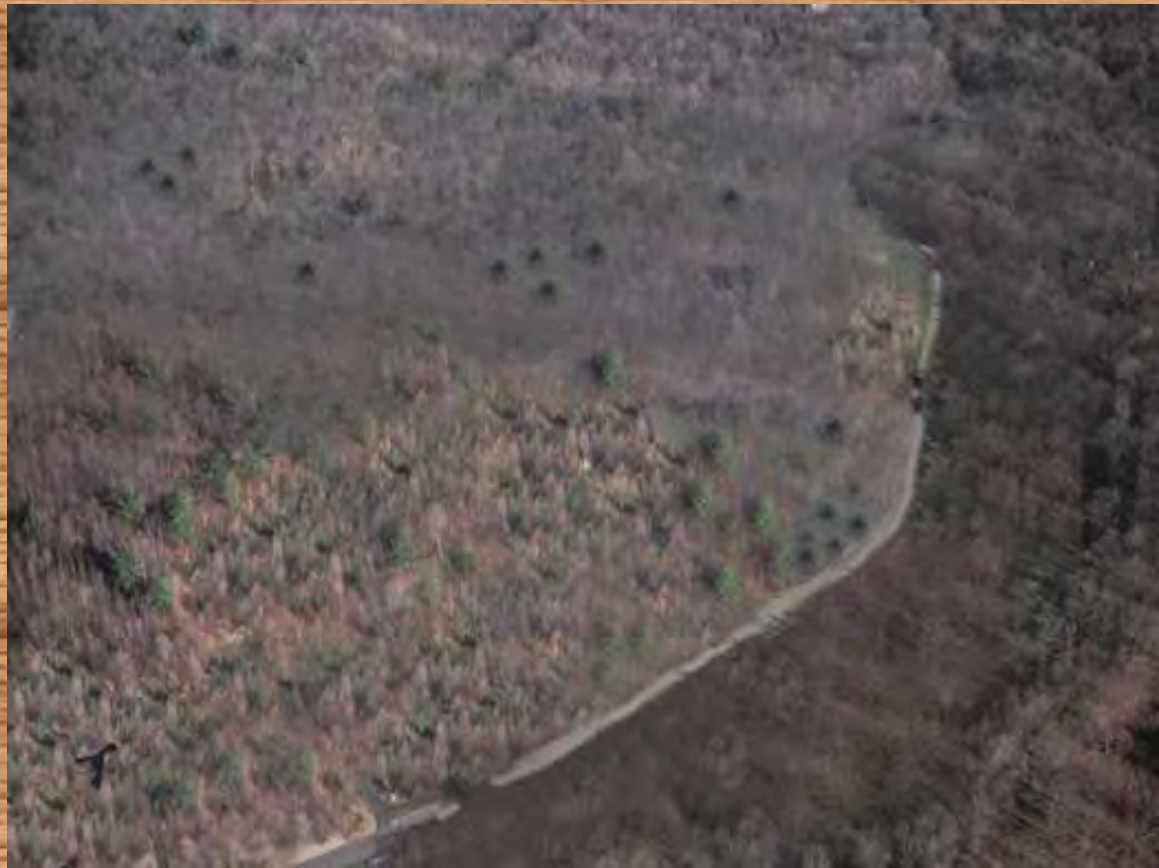


Working in your Woodlands: Sustainable income opportunities

When: Tuesday, October 25th, 12:00 pm – 4:15 pm

Where: Jefferson Ruritan Club, Lander Road and Rte. 340, Jefferson, MD (southern Frederick County) & field visit to Thrasher Farm, 4144 C Lander Road, Jefferson, MD

Cost: \$5.00 for Future Harvest CASA members; \$10.00 for non-members



**Attention real estate
professionals and Commissioners
of the Revenue**

Real Forestry for Real Estate

can help you become more
knowledgeable about
forestry!

VDPOR Approved for
8 PLE/CE/Appraiser Credits
Approved for 1 COR CE Credit

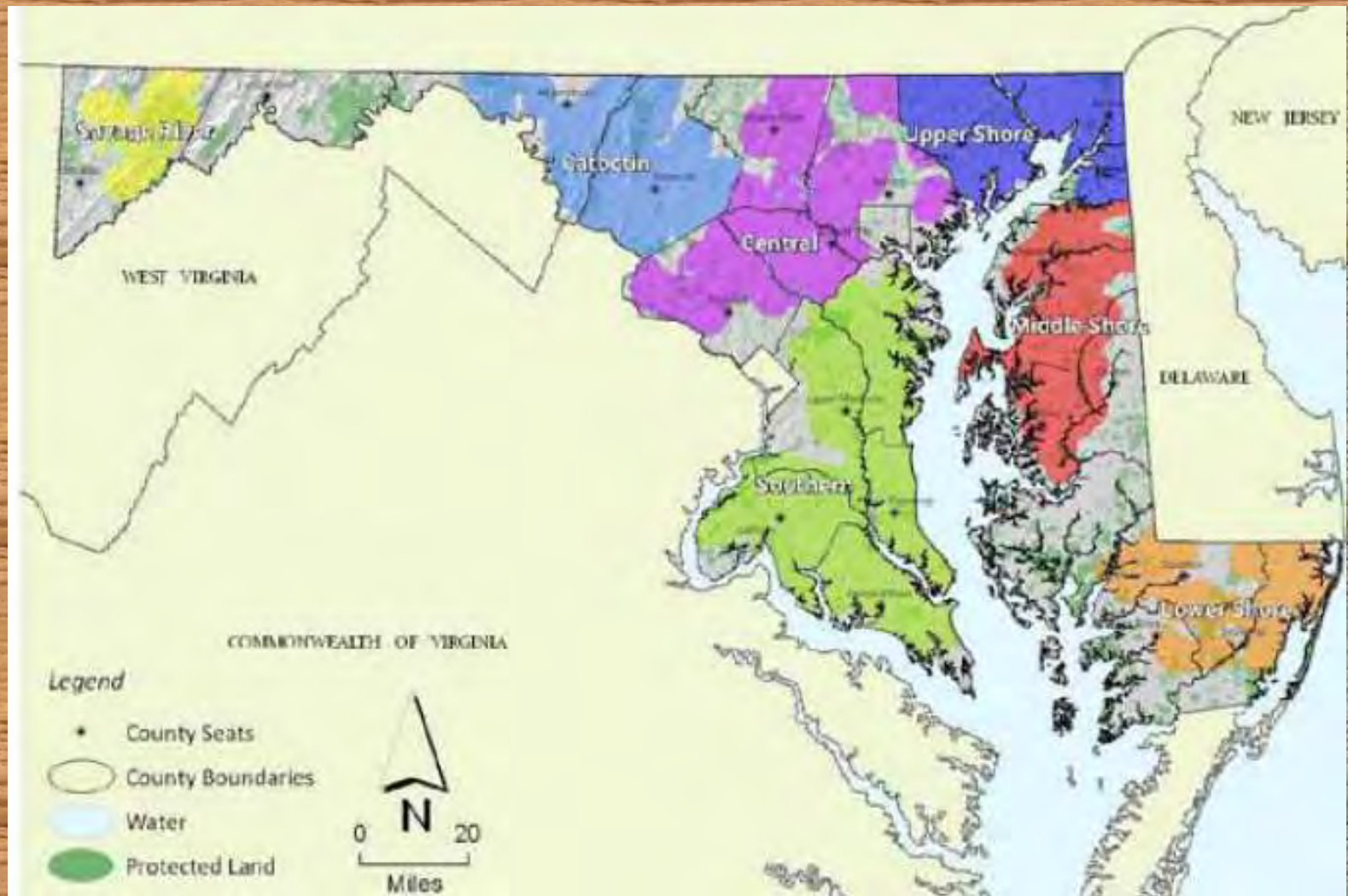


Feb. 23, 2012
8:30 - 4:45

Registration begins at 8:00
Fighting Creek Park
Powhatan Armory

Sponsored by:





Components

- 1. Forestry Education for Real Estate Professionals**
- 2. New woodland owner information packets**
- 3. Realtors Natural Resource Portal**



A Healthy Woodlands Partnership

[News](#) [FAQs](#) [Sponsors & Partners](#) [Contact Us](#)

- Home
- Join! Become a Member
- Your Woods Matter
- Create a Plan
- Events
- Video Gallery
- Members Home

username

SIGN IN

Site Search

SEARCH

Forestry for the Bay is a free, voluntary membership program made up of small and medium sized landowners who, like you, are interested in actively conserving their woodland or want to restore woods to their property.



photo - Mark Prout, USFS

How It Works

By simply completing our enrollment form you will instantly have access to the Woodlands Resource Page... [read more](#)



photo - Rob Hoelscher, USFS

Who We Are

The program is a collaborative effort of the US Forest Service, the Chesapeake Bay Program and the Alliance for the Chesapeake Bay... [read more](#)



A Message from Craig Highfield, Forestry for the Bay Coordinator

JOIN NOW!





A Healthy Woodlands Partnership

[News](#) [FAQs](#) [Sponsors & Partners](#) [Contact Us](#)

- Home
- Join/ Become a Member
- Your Woods Matter
- Create a Plan
- Events
- Video Gallery
- Members Home

username

Site Search

MEMBER PROFILE

User Name (Email Address):

Password:

State:

First Name (optional):

Last Name (optional):



A Healthy Woodlands Partnership

[News](#) [FAQs](#) [Sponsors & Partners](#) [Contact Us](#)

- Home
- Join! Become a Member
- Your Woods Matter
- Create a Plan
- Events
- Video Gallery
- Members Home

[log out](#)

Site Search

Woodlands Resource Page

Welcome back, Craig.

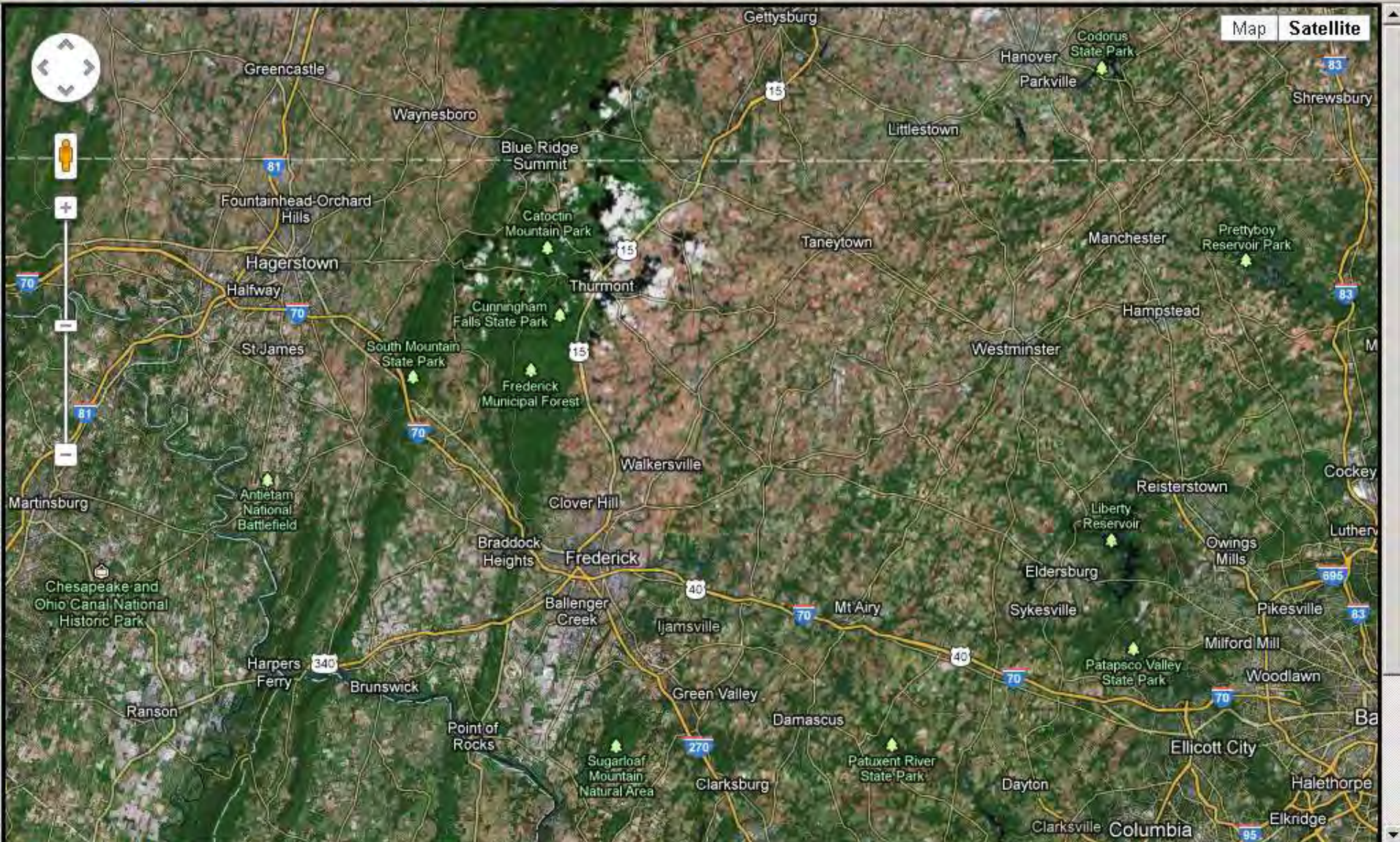
Things to do:

- [Create or edit your Woodlands Conservation Plan](#)
- [Create or edit your Objectives Plan outline](#)
- *NEW!* [Mapping Your Property \[external\]](#) *NEW!*
- [Get to know your woods](#)
- [Technical resources for your land](#)
- [Agroforestry](#)
- [Find a natural resource provider](#)
- [Media resources](#)

Additional Neighborhood Green Program links:













Remove Last Marker

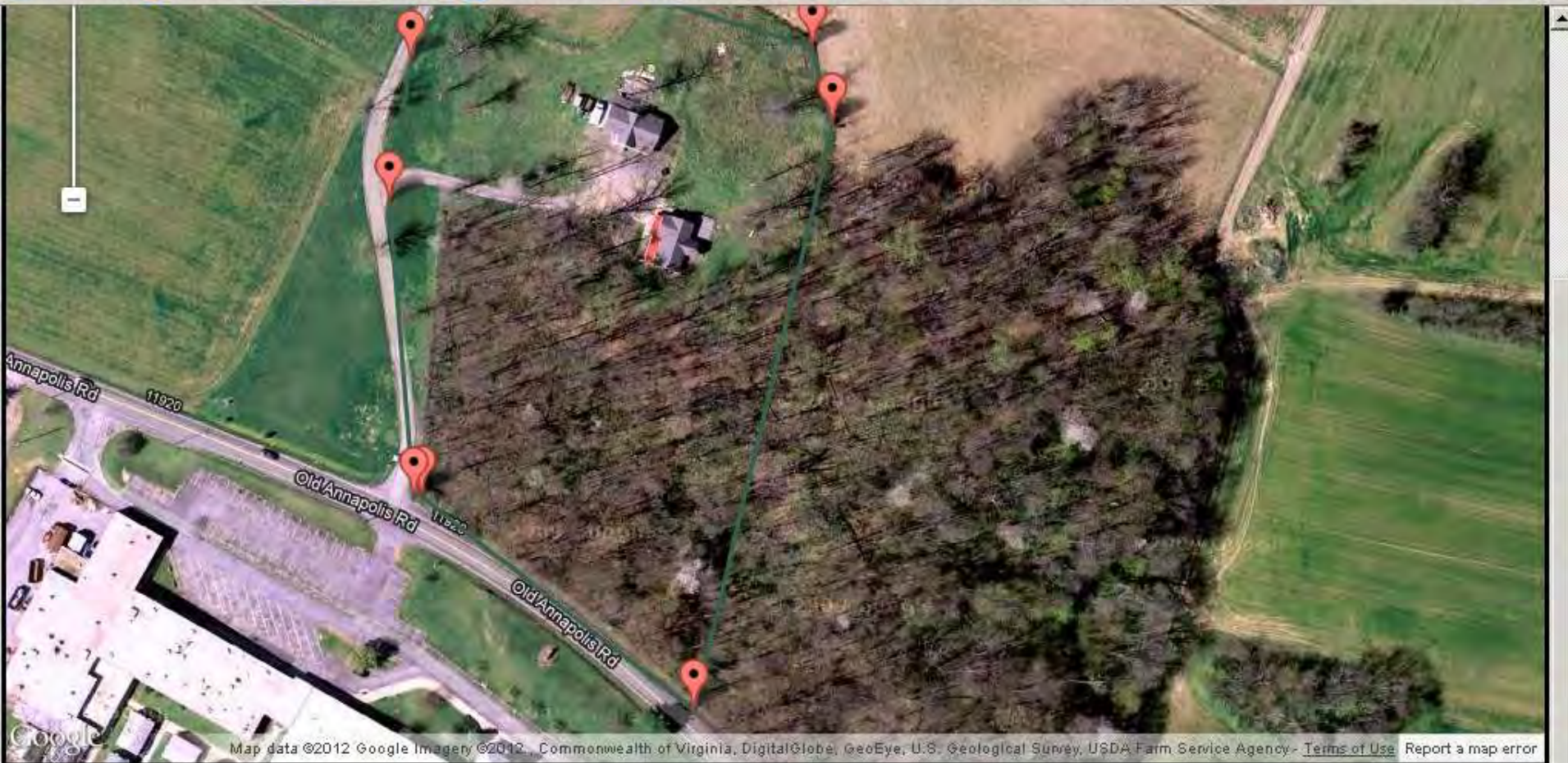


Remove Last Marker



Close the Outline Click this to close the outline of your map after you have placed your final marker.

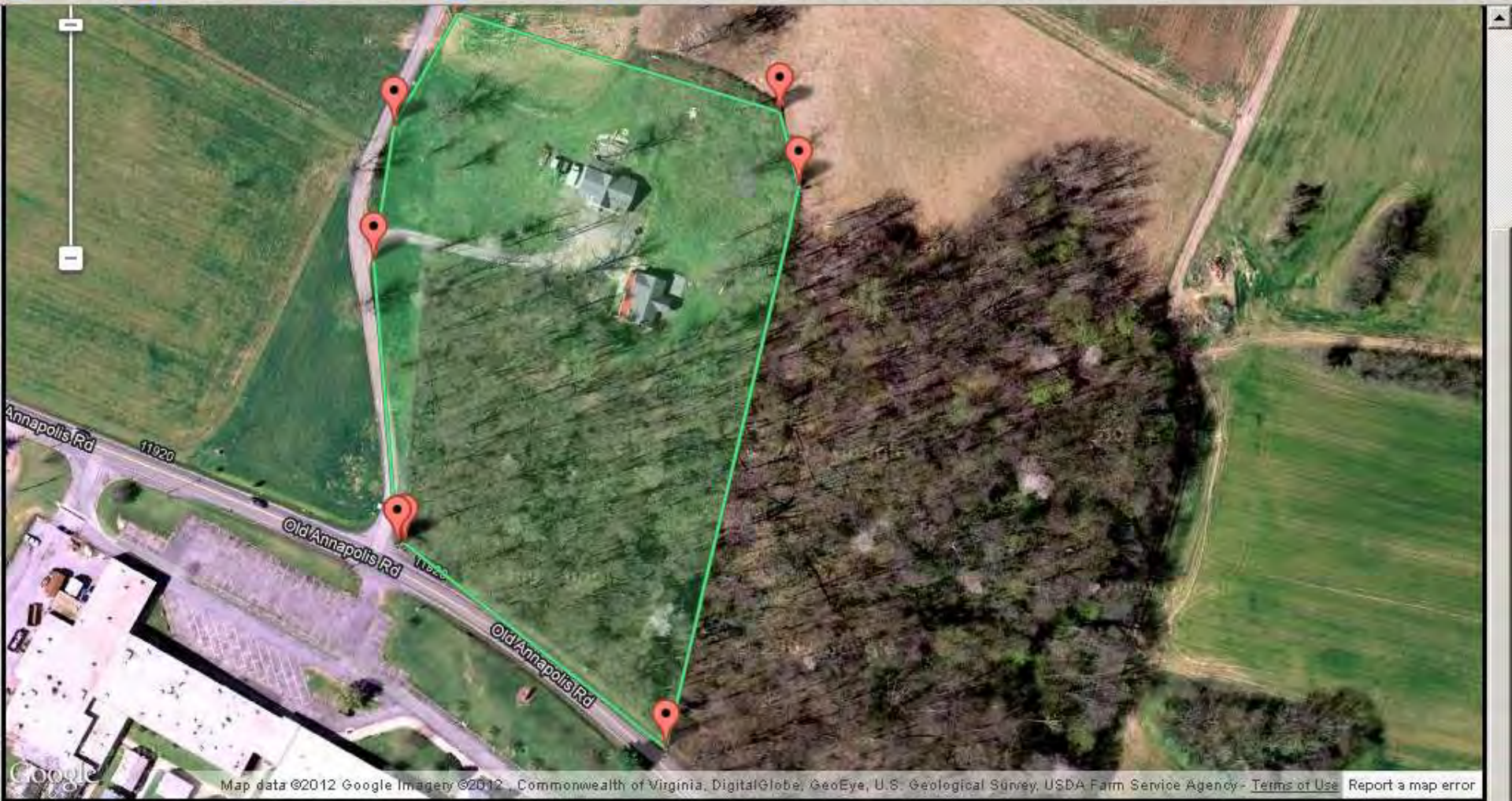
Remove Last Marker



Close the Outline Click this to close the outline of your map after you have placed your final marker.

Remove Last Marker

Clear the Map



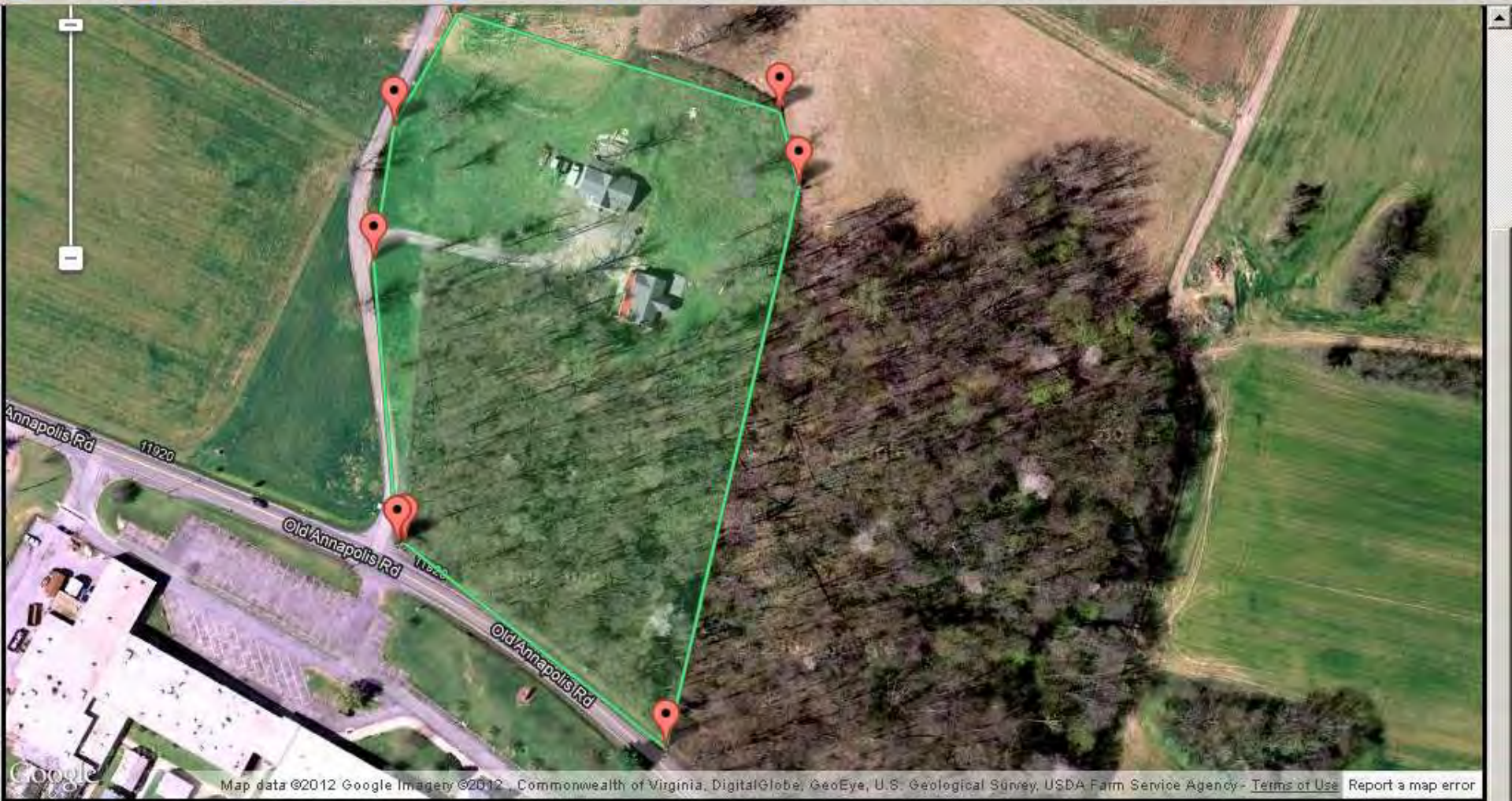
Remove Last Marker

Clear the Map

Map Name:

Save this Map

Calculate Acreage



Remove Last Marker

Clear the Map

Map Name: Old Man Flatt

Save this Map

Calculate Acreage



5.14 acres

OK

Remove Last Marker

Clear the Map

Map Name: Old Man Flatt

Save this Map

Calculate Acreage



A Healthy Woodlands Partnership

[News](#) [FAQs](#) [Sponsors & Partners](#) [Contact Us](#)

- Home
- Join! Become a Member
- Your Woods Matter
- Create a Plan
- Events
- Video Gallery
- Members Home

Woodlands Resource Page

Welcome back, craig.

Things to do:

- [Create or edit your Woodlands Conservation Plan](#)
- [Create or edit your Objectives Plan outline](#)
- NEW!** [Mapping Your Property \[external\]](#) **NEW!**
- [Get to know your woods](#)
- [Technical resources for your land](#)
- [Agroforestry](#)
- [Find a natural resource provider](#)
- [Media resources](#)

[log out](#)

Site Search

Additional WV links:





A Healthy Woodlands Partnership

[News](#) [FAQs](#) [Sponsors & Partners](#) [Contact Us](#)[Home](#)[Join! Become a Member](#)[Your Woods Matter](#)[Create a Plan](#)[Events](#)[Video Gallery](#)[Members Home](#)[log out](#)

Site Search

 [SEARCH](#)

Conservation Plan Outline Data Entry/Update

Please choose the appropriate form for the information you want to enter/update.

- extended member profile
- *landowner profile
- *general property description
- *management units
- *understory
- *forest health
- *stewardship objectives
- basic member profile

* = yet to be completed

[CONTINUE](#)



10:17



Forestry for the Bay Mobile 


Map Invasives


Read about Invasives


Visit Forestry for the Bay Website







