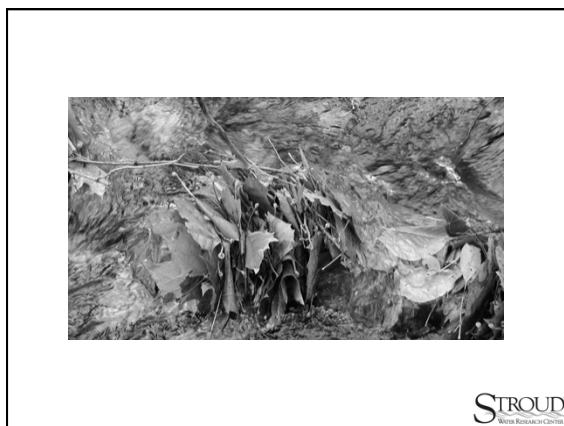
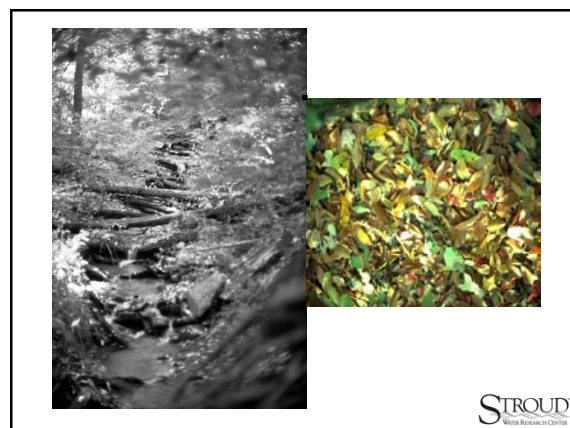
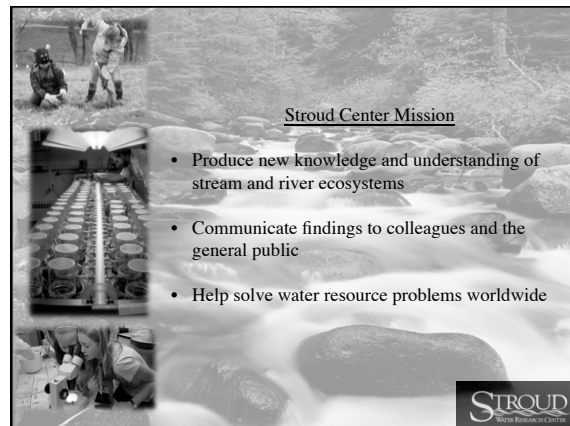
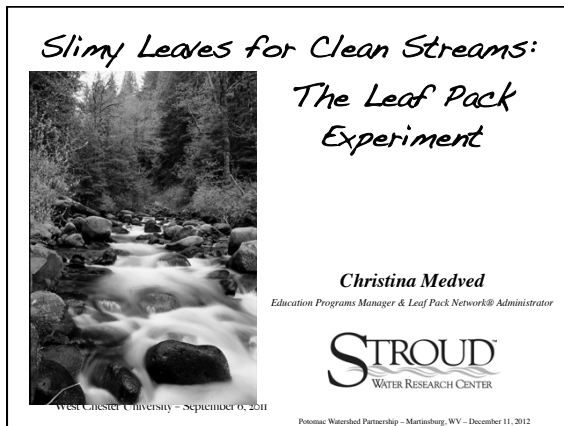
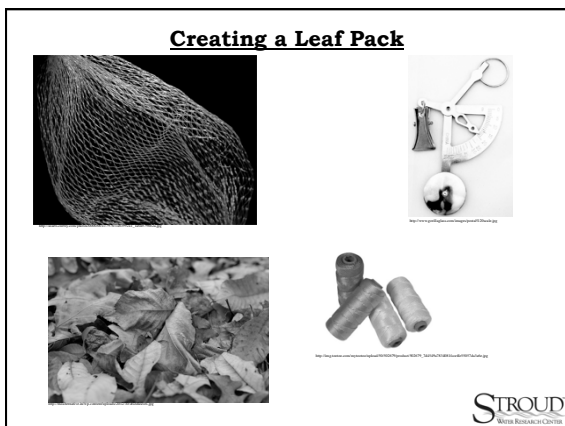
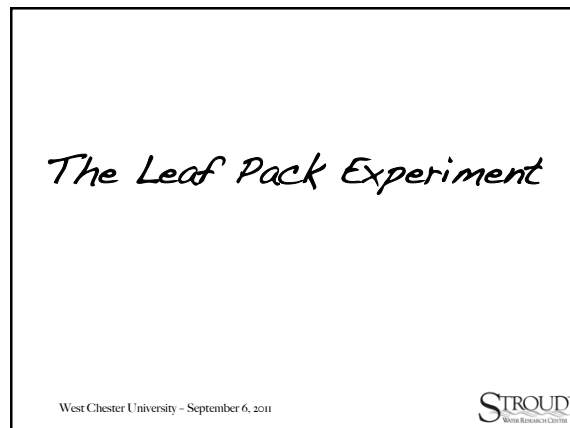
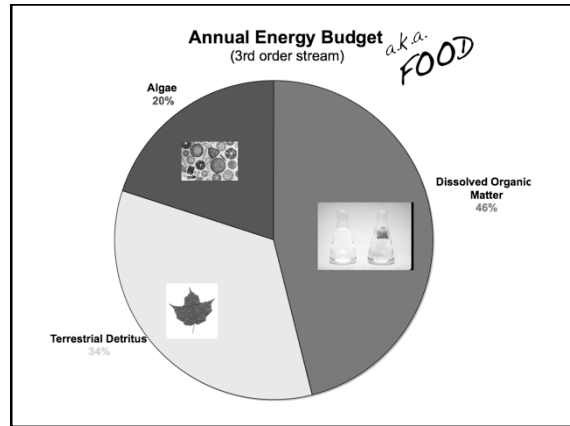
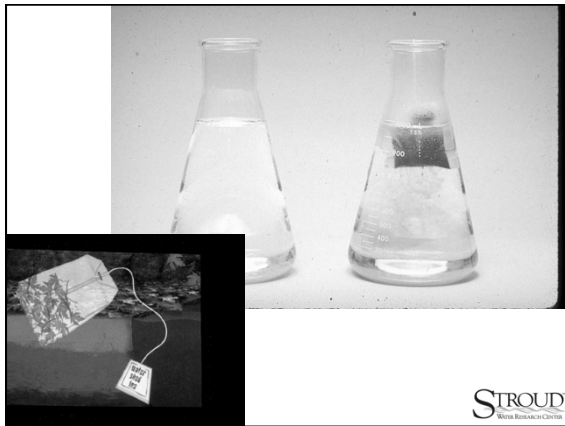


## Leaf Pack Experiment



## Leaf Pack Experiment





## 4





## Leaf Pack Experiment

### Forest Grove Community School Forest Grove, Oregon



Photo: Dana Moore, Freshwaters Illustrated  
Charlie Graham's students collect a leaf pack from the Lousignont Creek in Hyla Woods.



"On April 27, 2009, our classroom headed up to Hyla Woods for our second Leaf Pack analysis of Lousignont Creek. This creek forms the headwaters to the Nehalem River, which runs directly into the Pacific Ocean. Hyla Woods is a "sustainable" timber operation, owned by Peter Hayes. Two years ago, this creek and the entire watershed was severely damaged by flooding. Major efforts have been made to "restore" the creek and our Leaf Pack work is designed to help determine the effectiveness of these efforts. Our most recent work is part of our commitment to do ongoing monitoring, twice per year (Fall and Spring) over a three year period."



"I've always wanted to be a field scientist — to be out there in nature," says Nathaniel Terry-Schrag, a 5th grader at Forest Grove Community School in Oregon."

***"I just love the outdoors, and the fact that we were helping someone take water quality measurements made it seem like we had more of a purpose. I definitely thought it was a lot of fun,"*** said this 5th grader and author of *Salmon Come from the Sun*, a book about the Hyla Woods project and the Leaf Pack experiment.

STROUD  
Water Research Center

### Leaf Pack in National Parks



Yosemite National Park

&



Santa Monica Mountains  
National Recreation Area

STROUD  
Water Research Center

### Leaf Pack in National Parks



Death Valley National Park



Photo: Andy Schrag



Photo: Death Valley National Park

STROUD  
Water Research Center



Peru, Costa Rica, Guatemala, Kenya, Idaho, Wisconsin,  
New York, Pennsylvania, Maryland, Virginia, and more.....



### Contact Information:

Christina Medved  
[cmmedved@stroudcenter.org](mailto:cmmedved@stroudcenter.org)  
610-268-2153 ext. 301

STROUD  
Water Research Center

970 Spencer Road, Avondale, PA 19311  
[www.stroudcenter.org](http://www.stroudcenter.org)

